

LADYANA

LIVE ABOARD

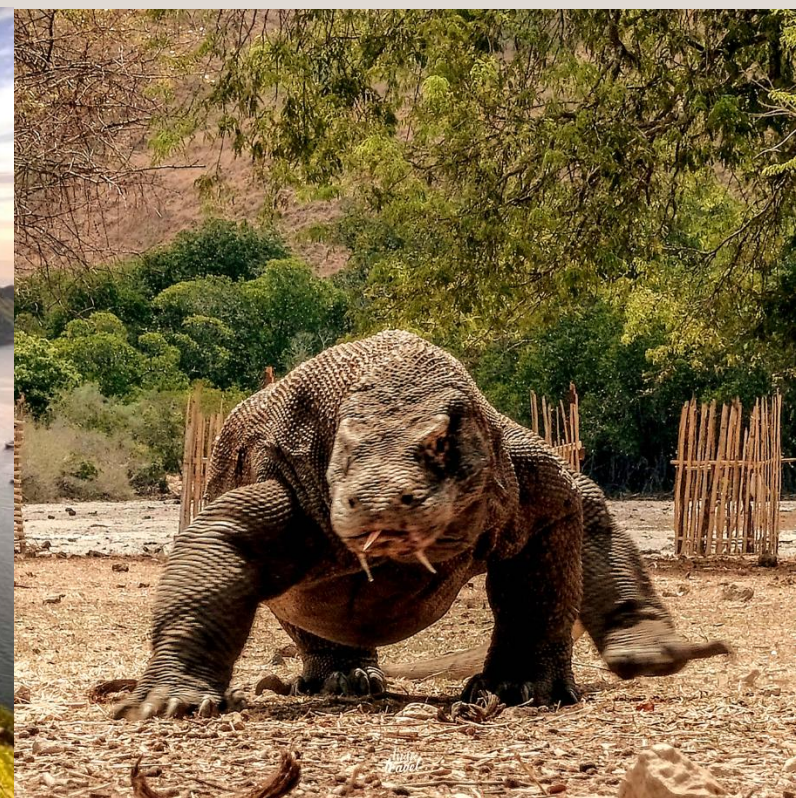


L
A
B
U
A
N

B
A
J
O

OPEN TRIP 3D2N

A SMALL PARADISE IN EASTERN INDONESIA



Boat Details

Specification:

- Dimensions: Length (25m) | Width (4,3m)
- Capacity: 14 Persons
- Engine: Mitsubishi 6D15
- Cruise Speed: 7-10 Knot
- Power Generator: Main Engine 10 KVA + Secondary 7 KVA
- Dinghy: 4,5m (Yamaha 15hp)
- Water Supply: 4000L
- 20 Set Life Vest
- Liferaft
- 2 Ringbouy
- AIS
- Garmin GPS
- Compass
- Radio Communication
- Fire Extinguisher
- First Aid Kit

Facilities:

- Rooms with AC
- TV & Karaoke Set
- Dining Area
- Kitchen
- Sundeck & Lazy Chair/Bean Bags
- Full Board Meals
- Dispenser
- Free Flow Mineral Water, Tea & Coffee
- Afternoon Snack & Juice
- Canoe

Rooms:

- Master Cabin: 1 Room (2-3 pax)
- Private Cabin: 1 Room (2-3 pax)
- Shared Cabin-1: 1 Room (4 pax)
- Shared Cabin-2: 1 Room (4 pax)

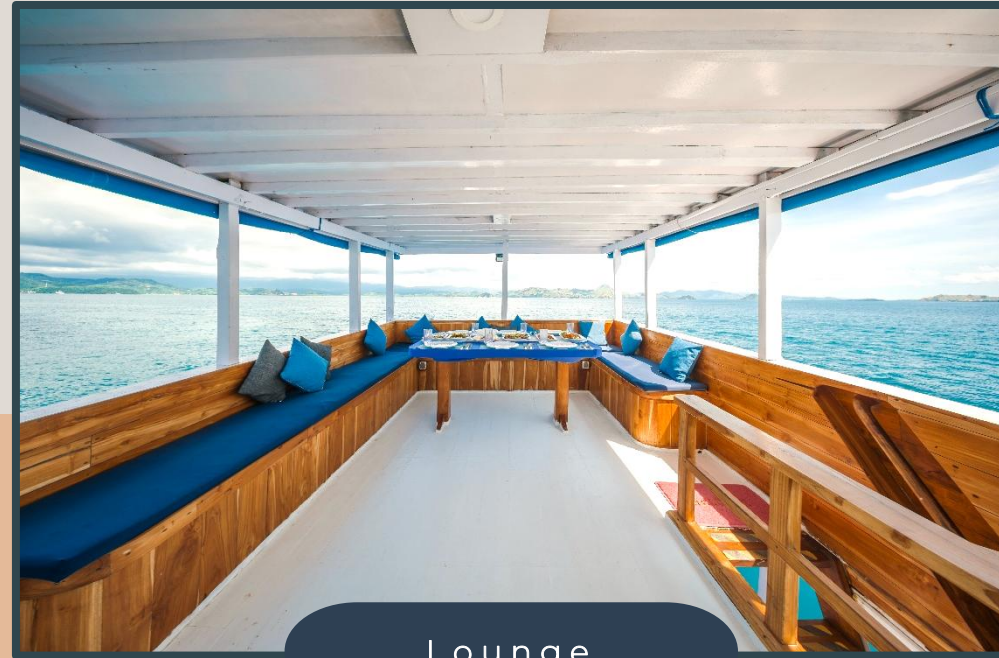


More Photo
[CLICK HERE](#)

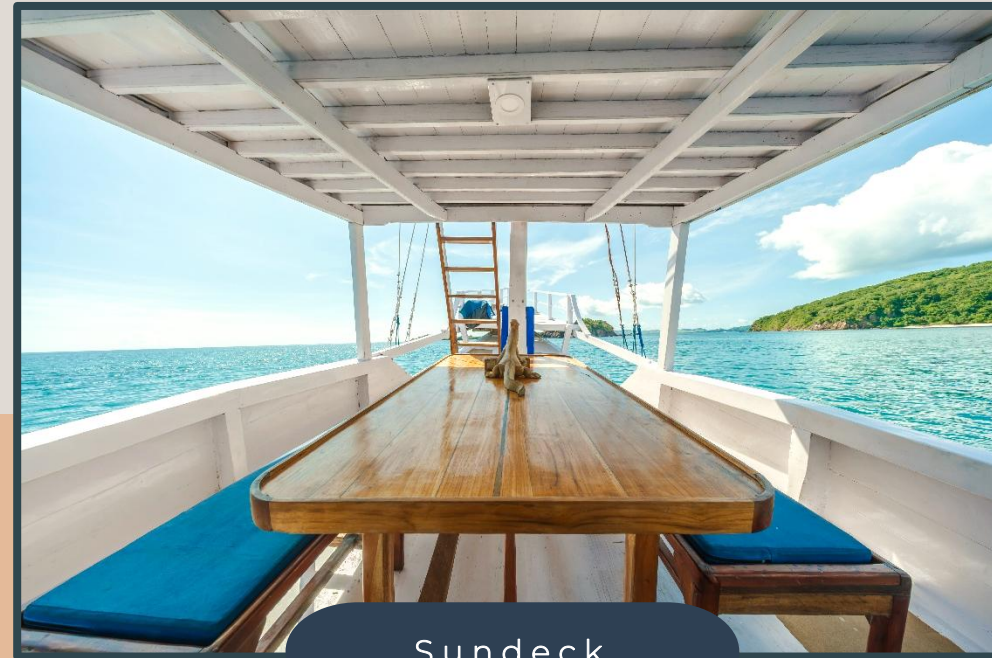
Boat Facilities

L
A
D
Y
A
N
A

L
I
V
E
A
B
O
A
R
D



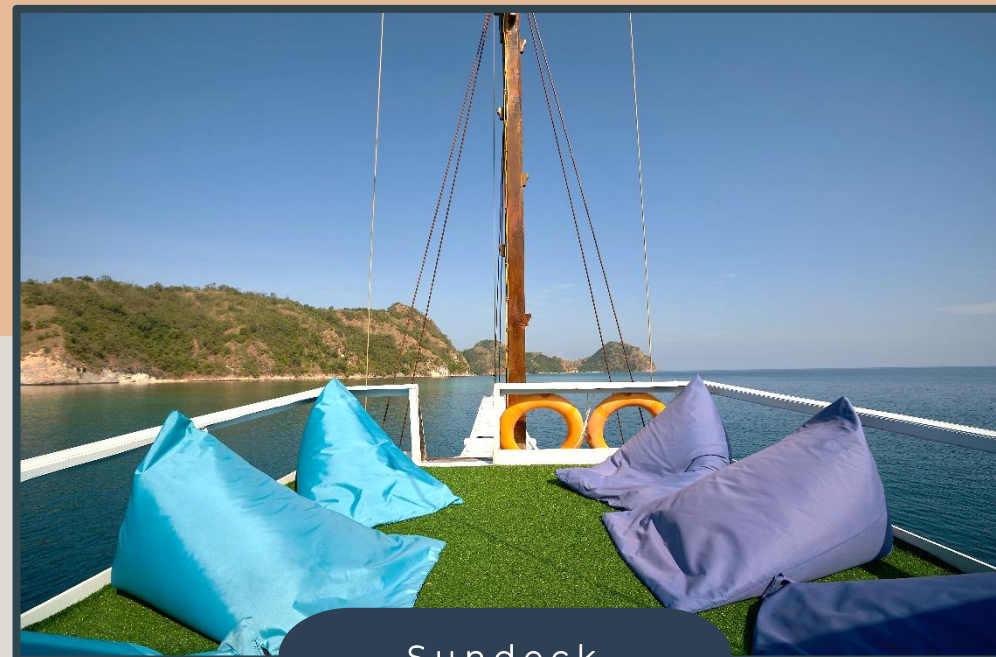
Lounge



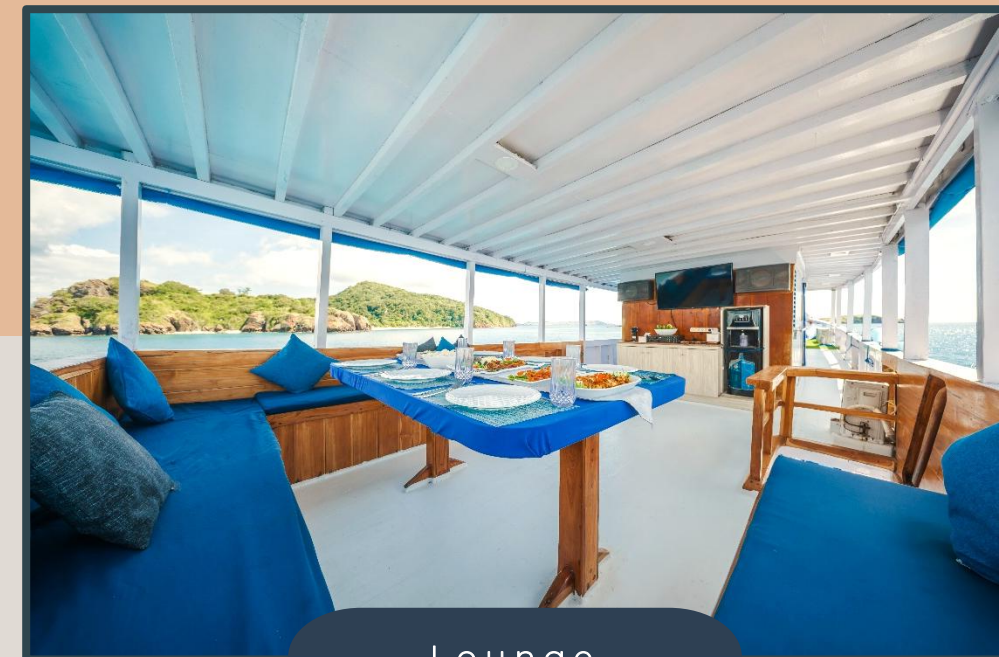
Sundeck



Dining Area



Sundeck



Lounge

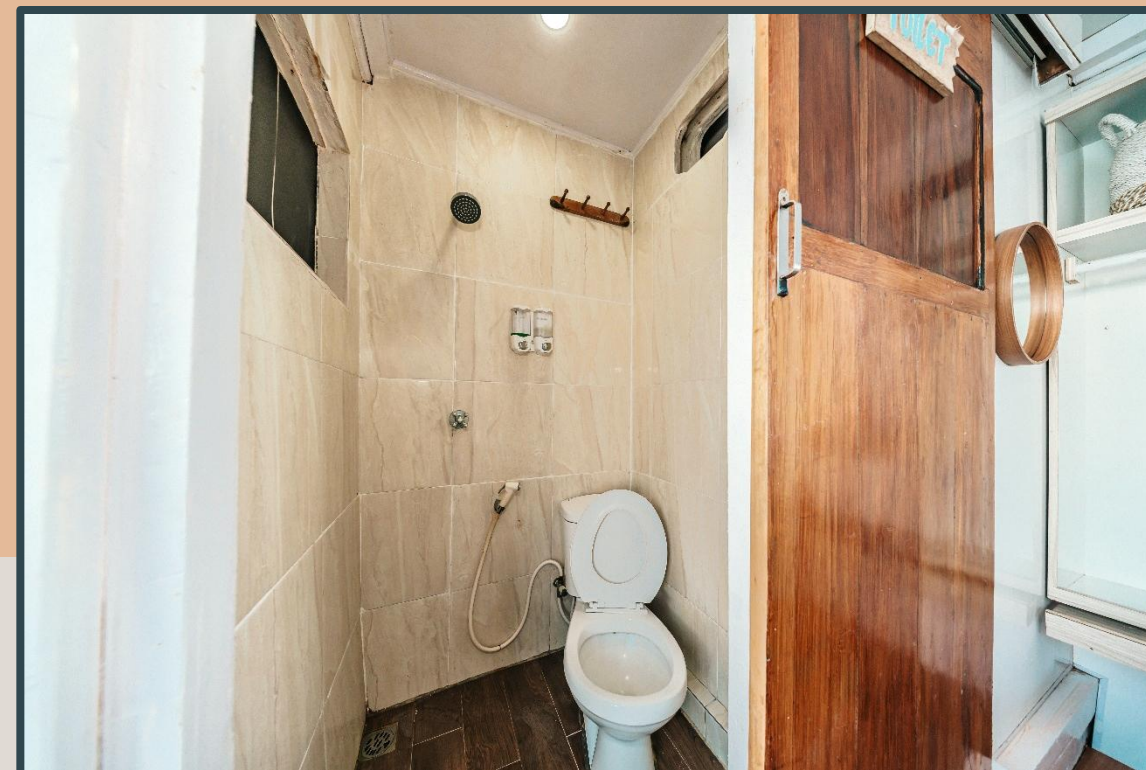
Master Cabin

Specification:

- Double Bed (2 person)
- Extra Bed (1 person)
- AC
- Ocean View
- Private Bathroom
- Shower (Cold)

PRICE : IDR 4.800.000/pax

Extra Bed : IDR 2.800.000/pax



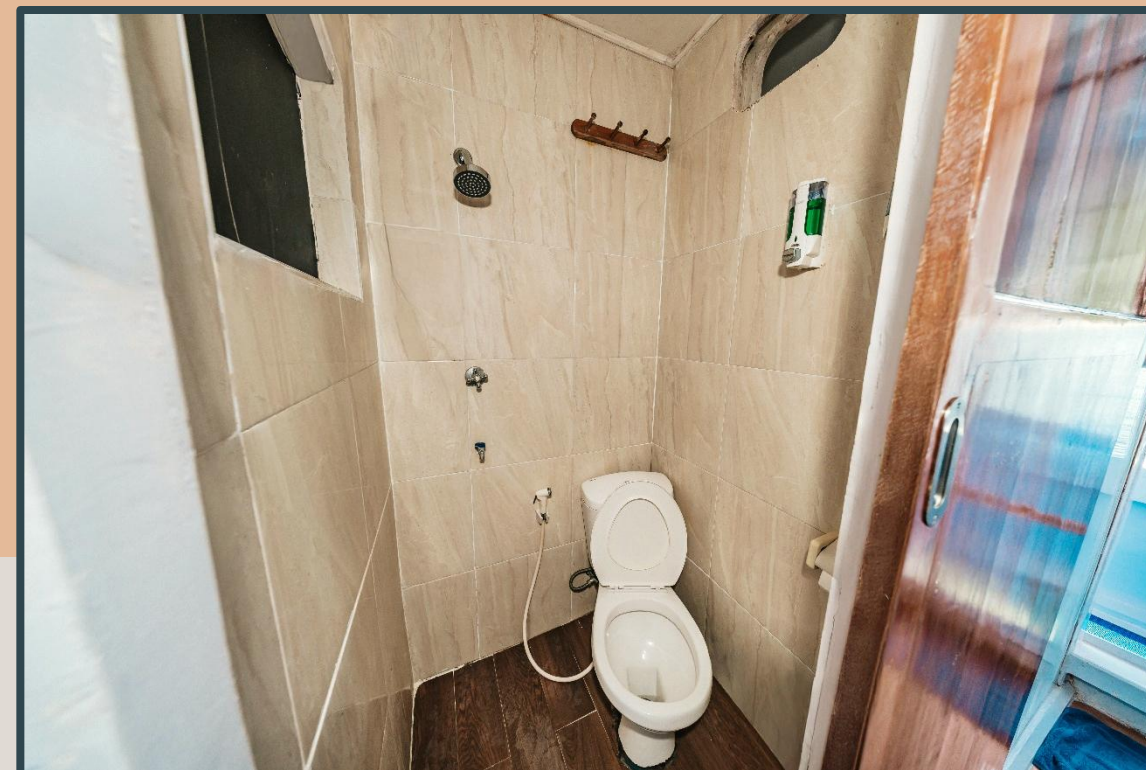
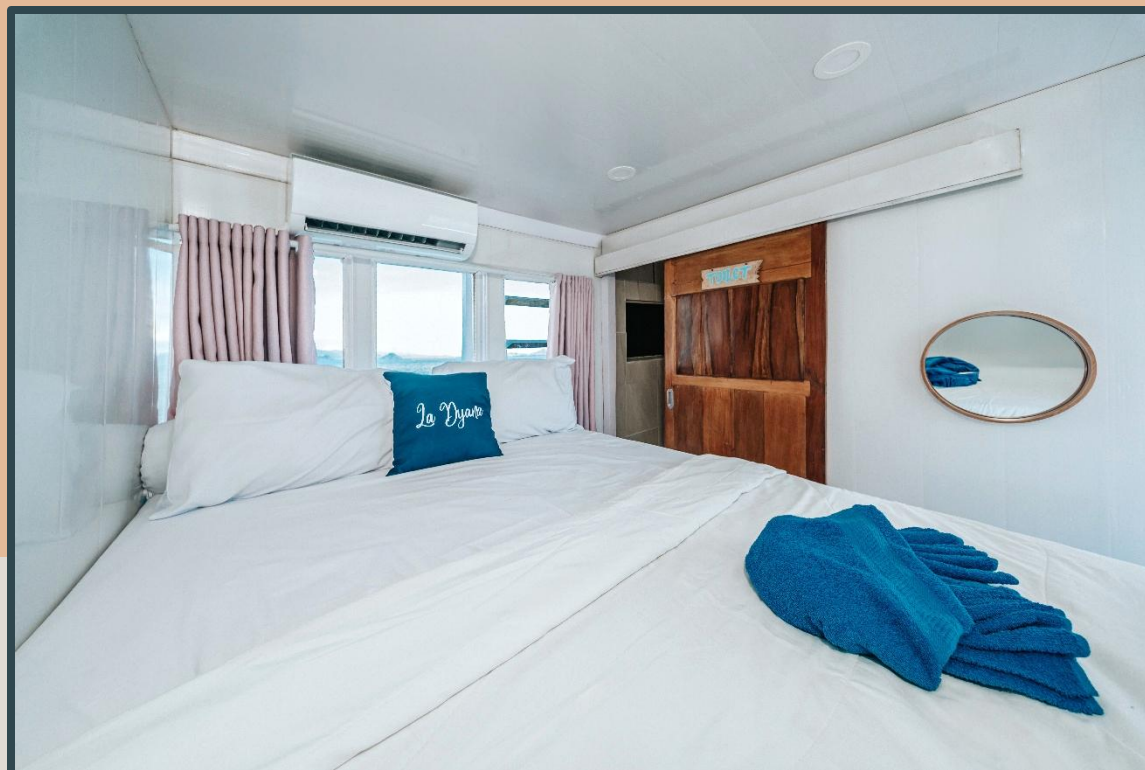
Deluxe Cabin

Specification:

- Double Bed (2 person)
- Extra Bed (1 person)
- AC
- Ocean View
- Private Bathroom
- Shower (Cold)

PRICE : IDR 4.500.000/pax

Extra Bed : IDR 2.800.000/pax



Shared Cabin-1

Specification:

- Single Bed (4 person)
- AC
- Ocean View
- Private Bathroom
- Shower (Cold)

PRICE : IDR 3.800.000/pax



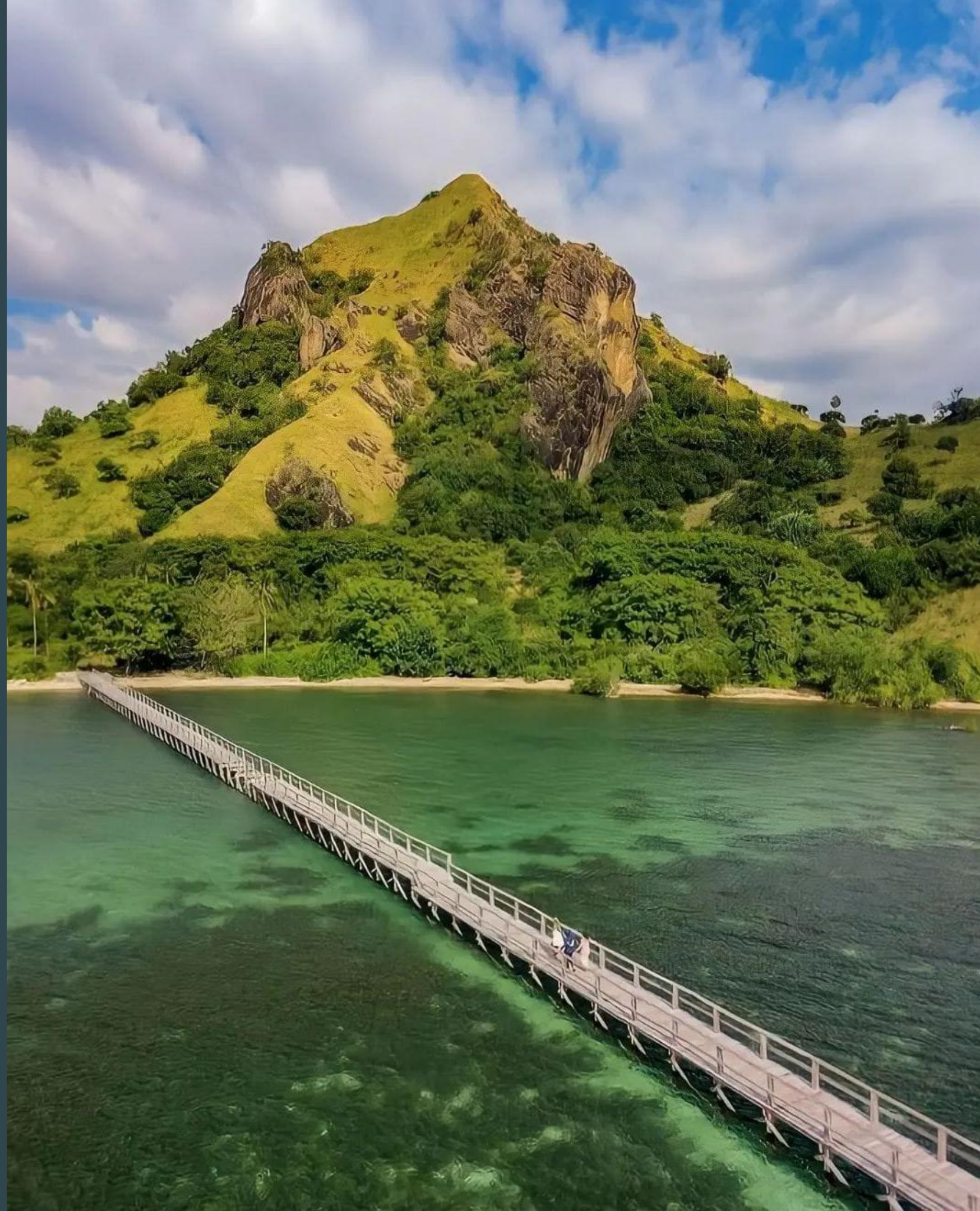
Shared Cabin-2

Specification:

- Single Bed (4 person)
- AC
- Ocean View
- Shared Bathroom
- Shower (Cold)

PRICE : IDR 3.550.000/pax





Include

- Airport / Hotel pickup and drop off
- Welcome Drinks
- Daily Meals (*Breakfast, Lunch, Dinner*)
- Daily Afternoon Snacks & Juice
- Free Flow Mineral Water, Tea & Coffee
- Snorkeling Equipment
- Island and Beach Excursions
- Local Guide & Documentation

Exclude

- Flight Tickets
- Hotel Before and After Trip
- Additional Personal Expenses
- Alcoholic Drinks
- Tipping Guide/Crew
- Entrance fee Komodo National Park

Itinerary

Day 1

- Kelor Island
- Manjarite Island
- Kalong Island

Day 2

- Padar Island
- Pink Beach
- Komodo Island
- Taka Makassar
- Manta Point

Day 3

- Sebayur / Siaba Island

Estimated Time

- Trip starts: 9:30 AM - 10:30 AM
- Trip ends: 11:30 AM - 12:00 PM

